



Scholastic ONLINE Information System
for the Web

Readme1st

Extracting Texts

© 2002 - 2006 RJM Systems – all rights reserved

This paper is for SONISWEB® Version 2.0. It is designed to get you started installing SONISWEB®.

If you are using the SONISWEB® Hosted Service, the installation is done for you, so you only need to download the manuals, page 3.

Your first step is to extract the SONISWEB® “Installation” text.

March 2006

(Readme1st.doc - 04/13/06 2:46 PM)

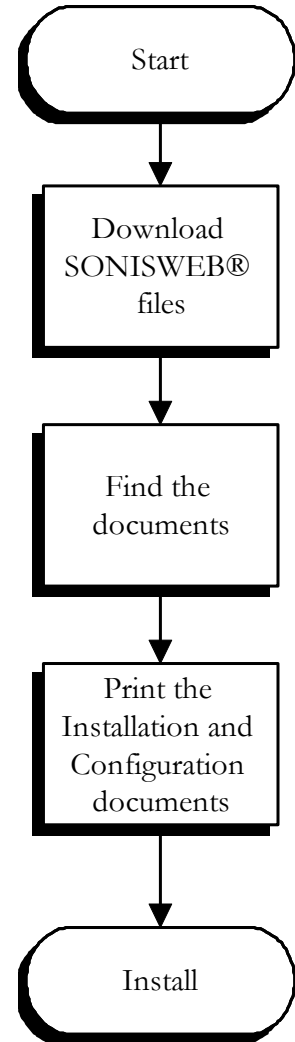
Systems, Inc.

The logo for RJM Systems, Inc. It features the letters "RJM" in a stylized, blue, serif font, with the "R" and "J" overlapping. To the right of "RJM" is the text "Systems, Inc." in a blue, italicized, serif font.

SETTING UP SONISWEB®

Figure 1 shows the document extraction process. You need the texts¹ to install SONISWEB® so the first step is to extract the files, especially the document directory. Then print or view the texts noted in “Finding the Texts” below.

Before beginning installation, contact SONIS support at 800-353-9093 or by e-mail at support@sonis.com. Ask for any new tips, software or documents.



• Figure 1 Text Extraction

¹ See “Companion Texts” on page 6.

Saving and Extracting SONISWEB® Files

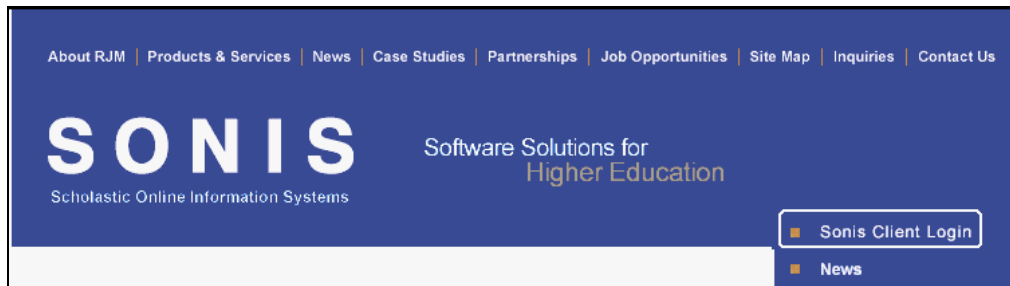
Downloading

You download the programs, database, and texts from RJM Systems' download site using the User Name (ID) and Password issued to you.

Users of SONISWEB® Hosted Services need only the manuals in SW200Docs.zip and SW200TechDocs.zip. They do not need to download the other files.

Access the SONIS® home page shown in Figure 2:

www.sonis.com

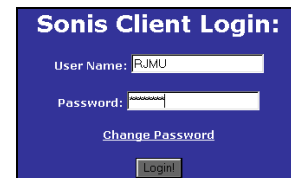


• Figure 2 SONIS Web Site with Login Choice

Click "Sonis Client login" highlighted in Figure 2. You get Figure 3.

Enter your User Name and Password then click the Login button in Figure 3.

You see a display like Figure 4. Your list may be longer or shorter than this, depending on what you need.



• Figure 3 Login for Download



• Figure 4 Download choices

From a note or a telephone call, RJM Systems staff tells you which files to download.

SonisWeb Files		
<u>File Name:</u>	<u>File Size:</u>	<u>File Date:</u>
IRS1098T.pdf	425576	01/18/2006 05:09:13 PM
Readme1st.pdf	198546	08/25/2004 04:18:10 PM
SONISWEB_Described.pdf	588383	01/24/2005 01:32:07 PM
SONISWEB_Version 2.0 Release.pdf	1245261	03/03/2006 04:43:43 PM
SW200.zip	9142674	04/21/2006 10:04:20 AM
SW200CFC.zip	155588	04/21/2006 12:19:10 PM
SW200CFCPatch.zip	13215	04/18/2006 10:37:51 AM
SW200Det.zip	3995753	04/21/2006 11:34:21 AM
SW200Patch.zip	1371673	04/21/2006 12:53:59 PM
SW200Docs.zip	15541801	04/05/2006 04:21:55 PM
SW200TechDocs.zip	4231149	04/21/2006 01:34:51 PM

[Back](#) [Delete Files](#)

• Figure 5 Files to Download

The files in Figure 5 are the typical files to be downloaded. Click a file and your browser will download it. They're downloaded one at a time. Be patient; some are quite large and take several minutes to download even with a fast Internet connection. The files are:

- [Readme1st.pdf](#).
- [SW200Docs.zip](#)²; this contains the non-technical texts and other documents in PDF form. You need Adobe Reader 6.0 or newer³ to view and print these.
- [SW200TechDocs.zip](#)²; this contains the technical texts in PDF form. You need Adobe Reader 6.0 or newer³ to view and print these.
- [SW200.zip](#)²; this contains the SONISWEB® programs.
- [SW200CFC.zip](#)²; these are also SONISWEB® programs.
- [SW200Det.zip](#)² is the demonstration database. If you already have a working database, you won't need this. (The database file inside this zipped file has a different name.)
- Patch or incremental change files suitable to your installation. [SW200Patch.zip](#)² or [SW200CFCPatch.zip](#)² are examples.

² 200 is the version as in "Version 2.0". 140 is "Version 1.4", etc.

³ You can use Adobe Reader 4.0 or 5.0 to view and print them but they don't have the search function for terms and words found in 6.0 and newer.

You need a “zip” file program to unzip or decompress the files. Two popular programs for Windows are WinZip® and PKZIP®. PKZIP® has a Linux version. You can download evaluation copies from these sites.

www.pkware.com

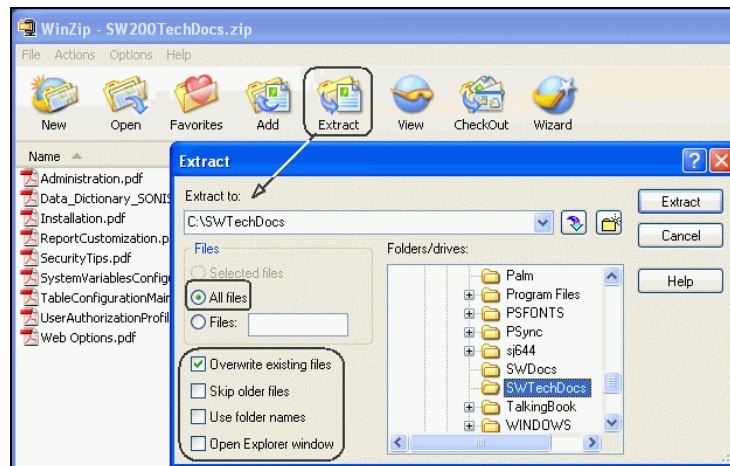
Storing the Non-Document Files

You can download all the files you need from Figure 5 at one time or just get the document files now and get the others when you are ready to install. If you download all the files, store them in a convenient folder. The “Installation” manual will guide you in placing them in proper folders later.

Extracting the SONISWEB® Documents

Set up two folders-directories so your users can access them.

- A folder for all users where you extract SW200Docs.zip.
- A folder for technical users such as your SONISWEB® administrator and your Information Technology (IT) staffs. You may want to put a password on this directory so that only technical staff have access to it. You extract SW200TechDocs.zip into this directory.



• Figure 6 Extracting Applications

1. To store the documents in each folder, start your unzip program, select Extract and “point” to the folder. In Figure 6 that was the C drive but your root drive will probably be different.



-
2. Make sure that “All Files” and “Overwrite existing files” are selected as seen in Figure 6.
 3. Click the “Extract” button to unzip the files and place them in the folder.

Finding the Texts

Open the folder you placed them in and double-click a file name (they all end in PDF).

With Adobe Reader 6 or later you can use the search function to look for a word or phrase in all the manuals in a folder. With Adobe 5 or earlier, you can view and print the manuals, but you cannot do a all-folder search. See the SONISWEB® manual “Index to Manuals” (Index to Manuals.pdf) to see the search techniques available.

Companion Texts

You need the following manuals to install, configure, and customize SONISWEB®.

Technical manuals in the technical folder:

- “Administration” (Administration.pdf)
- “Installation” (Installation.pdf)
- “Messages, Errors and Diagnosis” (MessagesErrorsDiagnosis.pdf)
- “Security Checklist” (SecurityTips.pdf)
- “System Variables Configuration & Maintenance” (SystemVariablesConfiguration-Maintenance.pdf)
- “Table Configuration & Maintenance” (TableConfigurationMaintenance.pdf)
- “User Authorization & Profiles” (UserAuthorizationProfiles.pdf)
- “Web Options” (Web Options.pdf)

User manuals in the user folder:

- “Browser Settings” (Browser Settings.pdf)
- “Index to SONISWEB® Manuals” (Index to Manuals.pdf)